



Redwood Coast Transit Authority  
 Williams Drive Electric Vehicle Charging Infrastructure Project -  
 Charging Management System RFP 2025-1– Addendum #1  
 November 6, 2025

Format

Questions received are repeated here and addressed individually.

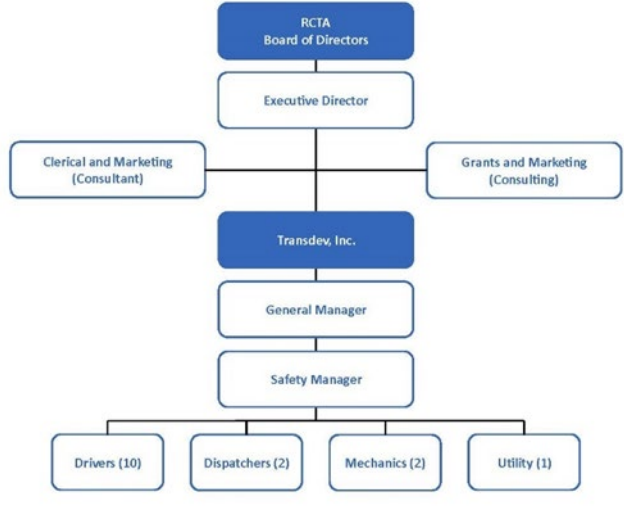
#	Question	Answer
1	We would like to formally request a submission extension from November 14th to November 28th.	The deadline for proposals has been extended to November 24 <sup>th</sup> at 5pm PDT.
2	Has RCTA shortlisted charger manufacturers for the L2 and DC chargers?	No.
3	Is RCTA willing to adjust this requirement? The reason being that new OCPP versions typically are not widely adopted immediately after release. For example, OCPP 2.0.1 was released in 2020 and is still not widely adopted within the transit industry, and these versions are not backwards compatible. Requiring an immediate OCPP version upgrade could affect charger compatibility and adoptability in the future.	The requirement in Appendix A.1 to “upgrade to the latest OCPP version throughout the term of the contract” has been removed and replaced with “provide a roadmap with estimated dates for adoption within 180 calendar days of version release.” Please see Appendix A.1 (Page 16 of document).
4	Can RCTA define what "dispatch-based load management" means in the context of this project?	“Dispatch-based load management” refers to an energy management approach whereby charging decisions for buses are optimized based on real-time and/or scheduled dispatch needs to ensure the performance of the transit service.
5	Can RCTA provide more information on how CMS should integrate with its SCADA, Remix and Swiftly Systems? What are the desired use cases/outcomes?	The desired outcomes relate to the “dispatch-based load management” described in Question #4.

6	Can RCTA provide more information on their SCADA system? What functionality does the SCADA system provide to RCTA?	The RFP incorrectly classified the Hexagon Fleet Management as SCADA. RCTA does not currently use SCADA systems. The Hexagon Fleet Management system is used by RCTA's operator, Transdev, to manually track preventative maintenance dates and mileages.
7	Can RCTA provide clarification on the backwards compatibility platform requirements mentioned in the support requirements?	This requirement has been removed. Please see Appendix A.3 (Page 18 of document).
8	The RFP technical requirements are highly specific and the three-week due date for the proposals is very limited: has the agency reviewed an existing CMS application or product and utilized information from that vendor in developing the RFP?	RCTA issued an RFI in summer 2025 for this technology and based its RFP on the market response.
9	If yes, is that vendor a potential bidder on the CMS RFP?	Not applicable, see Question #8.
10	The electronic interfaces between the CMS software application and the future system were not included in the RFP specification, is it your understanding that the CMS vendor must contemplate interfacing with whatever configuration of hardware is use in the future to support the Battery Buses and interface equipment?	The CMS Solution must be hardware agnostic.
11	You note in your RFP that the CMS Vendor will interface with the final design team to advance the final design of the charging facility; do you have any additional guidelines that describes what deliverables are expected from that collaboration and the roles and responsibilities of the CMS Team and the Final Designer?	The anticipated deliverables will be the review of and comment on 60% and final designs to identify any potential operational issues related to the CMS Solution.
12	Can you provide an organizational chart or description of the RCTA staff who will participate in the oversight and management of the CMS and Final Design Project?	RCTA Organizational Chart on last page of this Addendum #1.
13	For Exhibit 2 Price Proposal Form, Support has been listed as a one-time cost together with hardware and implementation. Typically, support is	On-going services, including support, provided to meet the requirements described in Appendix A should be

	<p>an ongoing cost that renews in line with the CMS subscription. How would you prefer we input this cost? For example, do we provide a lump sum support cost for 3 years in the Hardware &amp; Implementation table, or do we provide it as a line item within the CMS System Subscription table, or as an optional on-going CMS system component?</p>	<p>included as a line item within the CMS System Subscription.</p>
14	<p>In 3. Proposal Content, under References, we are permitted 1 page max and must use the Exhibit 3 form (Exhibit 4 in the RFP). However, the Exhibit we must fill out is for 1 reference only and fills a whole page. Will RCTA permit 3 max pages for this section to properly meet the requirement as it has been presented?</p>	<p>The page limit for References has been increased to three pages. Please see RFP Section 3 (Page 6 of document).</p>
15	<p>In Appendix D Insurance Requirements it specifies coverage for Business Automobile Liability Insurance. We do not have a company fleet (no owned vehicles) and therefore do not require insurance coverage for All Owned Vehicles. Is this requirement able to be removed in this case?</p>	<p>The Business Automobile Liability Insurance is needed if the CMS Contractor drives onto the property, as may be the case for installation. This specific insurance requirement may be waived during negotiations with the CMS Contractor should it not be applicable.</p>
16	<p>Is this the final SLA or is it only a sample?</p>	<p>The KPIs/SLAs included in the RFP are indicative and represent RCTA's desired performance outcomes. They are not intended to be final, but they do reflect the minimum performance standards RCTA expects the successful bidder to meet or exceed. RCTA is open to refining these metrics collaboratively during contract negotiation, including the specific measurement methods, thresholds, and reporting frequency — as long as the final SLAs achieve the same operational goals and service reliability described in the RFP.</p>
17	<p>Will telematics be installed on all vehicles? If so, which telematics provider will it be?</p>	<p>RCTA does not currently have a telematics system. The Endera Model B vehicles which RCTA <i>anticipates</i> purchasing may come with some level of telematics, but this is currently unknown.</p>

18	<p>Please confirm this requirement, is saying that sessions are able to be stopped? Accommodate charging operations where bus charging sessions are interrupted due to either scheduled or unscheduled maintenance operations mid-charging and buses need to be removed from a charger</p>	Yes.
19	<p>Are these to be auto emailed or downloaded from the platform? Provide summary monthly reports on overall system performance, using key performance indicators, and any outstanding support tickets and/or errors</p>	Both formats are acceptable.
20	<p>Are preliminary single line electrical diagrams available for review?</p>	No.
21	<p>Will there be existing power meters on site that can be integrated with for load management, or are tenderers to supply this hardware?</p>	Power meters will be installed as a part of the Williams Drive facility renovation, which is currently underway. CMS Contractors are not expected to provide this hardware.
22	<p>Can you please clarify if tenderers are expected to install their own hardware, or if this will be bundled into the existing contractors scope of work and tenderers are to only supply the hardware?</p>	If a hardware solution is proposed, the CMS Contractor shall offer installation services as described in Appendix A.5. RCTA may use this installation service at its own discretion and retains the right to use a different installation service (or self-install) as needed.
23	<p>Do we need to include both the unit cost and total cost, or just the unit cost in the exhibit-2 price proposal form?</p>	Exhibit 2 requests both the unit cost and the total cost.
24	<p>What specific items should be included under the Hardware Components line items (Price proposal form), should we include only CMS-related devices?</p>	This procurement is for a CMS Solution which may include hardware, as deemed necessary by the CMS Contractor to achieve the outcomes desired by RCTA and address its redundancy concerns. If the CMS Solution includes a hardware component, this should be included under the Hardware Components section of Exhibit 2.
25	<p>Please confirm what optional hardware components (price proposal form), if any.</p>	No specific optional hardware components are described in the Scope of Services. Respondents may propose

additional CMS-related components which RCTA may choose to purchase.



The *Executive Director* will be the primary point of contact and is the project manager for the Williams Drive EV Charging Infrastructure Project and the closely related Charge Management Systems procurement and integration.